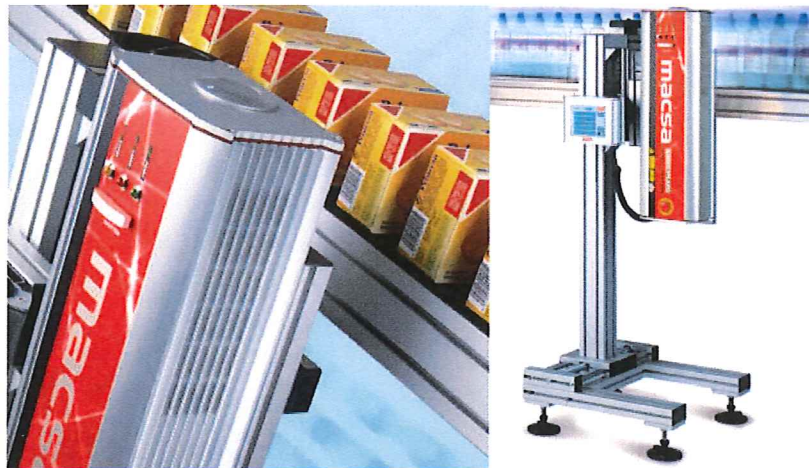



 Search

- Home
- ICON i 1010 LASER
- K-1000 LASER**
- F-9000 Fiber Laser
- S-3000 Series
- D-5000 Series
- KIP-1070 SHS
- Fume Elimination
- Exhibition
- Video Site
- Case Study
- Contact MACSA

## K-1000 macsa LASER MARKING & CODING SYSTEM



**FROM EVOLUTION TO INNOVATION**  
 THE MACSA K-1000 SERIES IS THE SOLUTION FOR MARKING YOUR PRODUCTS WITH INCREDIBLY CLEAR MESSAGES AT MINIMAL OPERATION COSTS.

### USER INTERFACE FOR LASER SYSTEM

**THE INCREDIBLY COMPACT DESIGN** along with an adjustable marking head ensures that you can install this system on even the most complicated production lines.

**HAND-HELD TERMINAL**  
 Connection via RS-232 with ScanLINUX software included in laser marking system • creation and editing of text messages • able to create up 4 lines of text • 4 types of MFF fonts • modify size (max. 20mm) and separation between characters • modify message XY position • tim marking in multiple formats • clock adjustment • laser system control parameters • sequential numbers • password protection system • for both static and dynamic applications.

**THIS EASY TO USE SYSTEM** works through a combination of extremely fast mirror tracking systems and the most modern software and hardware you can be assured of reliable high speed marking.

**TOUCH SCREEN**  
 Connection via RS-232 with ScanLINUX software included on marking laser system • Handheld Terminal emulator • allows control of the laser marking system from a remote touch screen • easy integration • easy and safe operator access for changing messages and parameters on line • for both static and dynamic applications.

**THE LATEST IN LASER TECHNOLOGY** along with the fact that you don't need expensive replacements results in a system that requires little maintenance, minimal operation costs and no headaches.

**PERSONAL COMPUTER**  
 Connection via TCP/IP (Marca Lite™) or Ethernet TCP/IP (Marca™) with ScanLINUX software included on marking laser system • compatible with all kinds of operating systems Windows NT/Me/2000/XP • able to control the laser marking system from a remote PC • quickly transfer of messages from PC to ScanLINUX • confers powerful graphics capabilities • quickly and easy access to the editing and graphics capabilities • able to create messages in all of the marking area • for both static and dynamic applications.

**THE MARKING PROCESS** is unimpeded because you don't need an expensive and space consuming PC on the production line. Furthermore in Macsa lasers with MACSA's software, you can link several K-1000 laser systems together for even greater control and increased production or to increase the graphic features of the K-1000 laser connecting a PC through the full graphic interface kit.

**ALL OF THESE FEATURES** ensures that everyone of your productions is marked with the same high degree of quality and permanence guaranteeing accurate identification for the lifetime of your products.

**A DIVERSE RANGE OF MATERIALS** can be marked utilizing the K-1000 system including labels, cardboard, PET, glass, coating and wood.

**Description - Laser marking system - Laser-K-1000**



The Macsa K -1000 Laser series is the solution for marking your products with incredibly clear messages at minimal operational costs.

Nominal power models 10, 30 and 60w,  
Lenses: 60x60, 75x75, 100x100, 150x150, 200x200 and 250x250mm,

Laser control using handheld, Touch screen or MARCA Software.  
Version 9,3 available,  
IP65 models available,  
Diode marking area optional

**SOFTWARE FOR LASER SYSTEMS**

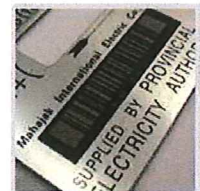
**SCANLINUX™ V 3.3 INTERNAL SOFTWARE CONTROLLING THE LASER MARKING SYSTEM**

ScanLINUX is the internal software running on LINUX managing the laser marking system • controlling laser beam position • calculating printer laser position • controlling angular position of scanner mirrors • calculation corrections for marking on the fly • controlling electronic scanning board input/outputs • ScanLINUX allows the operation of the Handheld, Touchscreen, Marca Life™ and Marca™ software • ScanLINUX includes Crystal Font™ dot matrix fonts • Scan LINUX software provides the option of changing the menu language of the Handheld terminal. It also allows the user to see the number of marks made during a printing session without going out of the printing menu.



**MARCA LITE™ V 5.3 SOFTWARE FOR NETWORKING, STATIC AND DYNAMIC APPLICATIONS VIA TCP/IP**

Easily installed • Software compatible with Windows NT/2000/XP for networking, static and dynamic supplier with protection key • networking capabilities of several laser dynamic application systems via TCP/IP • basic graphic interface able to built in text and graphic in all the marking area • create simple logos • capable of downloading MFF fonts and DXF vector files • selection of the user message via RS-232 • alarm control • messages activated by hourly, daily or monthly changes.



**MARCA™ V 5.3 SOFTWARE FOR HIGH RESOLUTION & STATIC/DYNAMIC APPLICATION VIA ETHERNET TCP/IP**

Easily installed • Software compatible with Windows NT/2000/XP for high resolution & Marca™ software supplied with protection key • controls laser systems via Ethernet static/dynamic applications TCP/IP • powerful WYSWYG design editor in all the marking area • zoom • unlimited layering • bar codes • 2D barcodes • MFF font editor • character filling features • capable of downloading BMP, JPG, TIF, PCX and other graphic files • capable of downloading DXF vector files with multiple import options • objects and characters morphing • ODBC (database) features • fill object features • true type text fonts • messages activated by hourly, daily or monthly changes • networking capabilities of several systems via Ethernet TCP/IP • access registration for all the users • "auto text" external messages • aligns the selected objects • power, frequency, resolution and speed adjustments by software • allows to configure function keys • Unicode Enable.



[www.macsa.asia](http://www.macsa.asia)

HOME |

©Copyright 2002-2019 All rights reserved.

MACSA in Asia

998 Moo 3, Samrong Nua, Muang, Samutprakarn 10270  
Tel : Tel : +66 (0)2 759-3605-12 Fax: +66 (0)2 759-3569  
Email : support@macsa.asia